

# EASYPREP<sup>®</sup>

Fully Automated Liquid Based Cytology System



# EASYPREP®

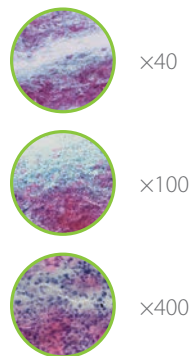
EASYPREP® System is a liquid-based cytology specimen collection, preservation and automated slide preparation system that produces standardized thinlayer slides for **cervical cytology specimens** and other **non-gynecologic cytology specimens**.



Dimension	1300mm(W)×800mm(D)×1450mm(H)
Weight	450 Kg
Operation	Full Automation
Principle	Sedimentation
Quickness	56T/H
Circle of smear	15mm
Certifications	KFDA, CE
Ancillary test	Possible

## Conventional Pap smear vs Liquid-based Pap test

### Conventional Pap smear



VS

### Liquid-based Pap test



Stratified cell and crowding phenomenon	Cell Distribution	Thinlayer
About 70-80%	Cell Loss Ratio	0% (All cells can be kept in the preservative solution)
Hard to read the cells due to blood and mucus substance	Reading	Easy to read the cells by separating excessive obscuring materials (blood and mucus)
Can be changed if the cells do not fixated immediately	Format	Can be kept in preservative solution
The specimen can not be reused after smear	Reproducibility	The specimen in the preservative solution can be used within the term of validity
Recollect patient specimen	Re-examination	Available for additional tests (e.g HPV test) with the collected cells left

## EASYPREP® Process

1. Sampling
2. Dispensing specimen
3. Moving to Centrifuge
4. Smearing & Washing
5. Smear Completion

★ Option

1. Barcode module
2. Staining module



Sample Collection



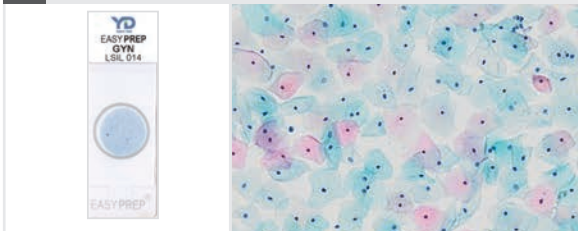
1 Sampling



2 Dispensing specimen



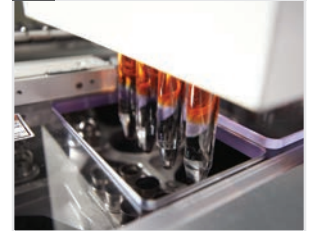
5 Smear Completion ★



4 Smear & Washing



3 Moving to Centrifuge



## Ancillary Test -Molecular Diagnostic System

### HPV genotyping

Sample Collection



HybREAD480®



MolecuTech REBA HPV-ID®  
Real HPV-ID®



## EASYPREP® Features

### High Cellularity

- By adopting sedimentation and centrifuge method / No cell loss

### Automation

- Total walk-away system : the world first processor with a built-in centrifuge

### Select Mode

- Both **GYN** and **Non-GYN** tests are possible at the same time  
- Various options are available to smear specific samples

### Customization

- Easy adjustment of the parameter in accordance with laboratory requirement

### Clarity

- Proper separation of mucus, inflammation cell and supernatants  
- Cell shape and structure(morphology) are well maintained  
- Clinically significant cells are evenly distributed for an easier reading

## EASYPREP® Test Kit

### PRESERVATIVE SOLUTION

1. GYN(Gynecological specimen) - EZ01 / 17mlx16ea/box



2. Non-GYN(Non-gynecological specimen) - EZ01 / 15mlx16ea/box



### REAGENT

1. Gradient density reagent . . . . . EZ02, 1L
2. Suspension buffer . . . . . EZ03, 1L
3. Fixative solution . . . . . EZ04, 1L
4. Rinse solution . . . . . EZ05, 1L

### CONSUMABLES

1. Coated slide glass . . . . . EZ06, 64ea/box
2. Slide chamber . . . . . EZ07, 64ea/pack
3. 5ml Tip . . . . . EZ09, 200eax2/box
4. Centrifuge tube . . . . . EZ10, 200ea/box
5. Brush . . . . . EZ11, 10ea/pack
6. Vial plug . . . . . EZ12, 64ea/pack

## EASYPREP® Reference

### Journal

1. Cytological Evaluation and REBA HPV-ID HPV testing of Newly Developed Liquid-Based Cytology, EASYPREP : Comparison with SurePath.  
*The Korean Journal of Pathology* 2013; 47: 265-274. Lee YS, Gong GY, Sohn JH, Ryu KS, Lee JH, Khang SK, Cho KJ, Kim YM, Kang CS.,
2. Comparison of EASYPREP and SurePath in Thyroid Fine-Needle Aspiration.  
*Diagnostic Cytopathology*, Vol.44, No 4. Yosep Chong, Ki Hyun Baek, Jee Young Kim, Tea-Jung Kim, Eun Jung Lee, and Chang Suk Kang.

### YD Diagnostic CORP.

#76, Seori-ro, Idong-myeon, Cheoin-gu, Yongin-si, Gyeonggi-do, 17127, Republic of Korea

T 82-31-329-2000 F 82-31-329-2002 [www.yd-diagnostics.com](http://www.yd-diagnostics.com) [admin@yd-diagnostics.com](mailto:admin@yd-diagnostics.com) CAT.NO.YDC-058(Rev.02/2017-04-03)