

Vision Cyto[®] Pap

Screening of cervical cancer



Workflow in the laboratory



Automated microscopy

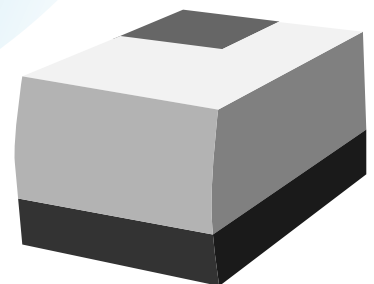
Slide scanning and analysis with Vision Cyto[®] Pap system.

Sample collection



Slide preparation

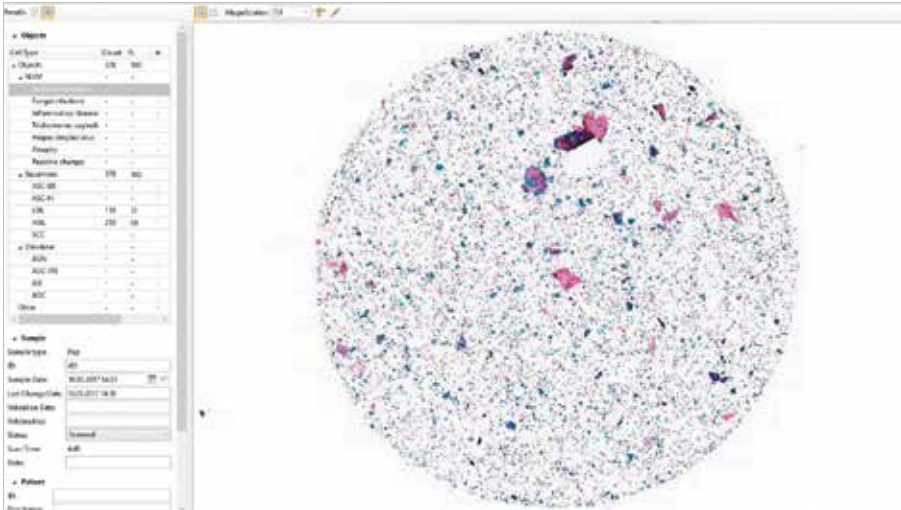
LBC processor.



Molecular analysis

HPV-test.

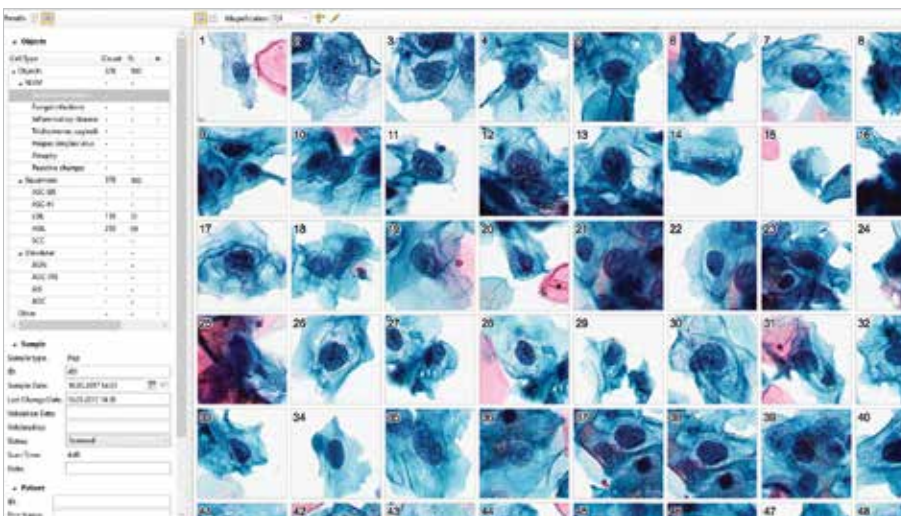
Vision Cyto[®] Pap automatic imaging analyzer for cervical smears



Automatic scanning

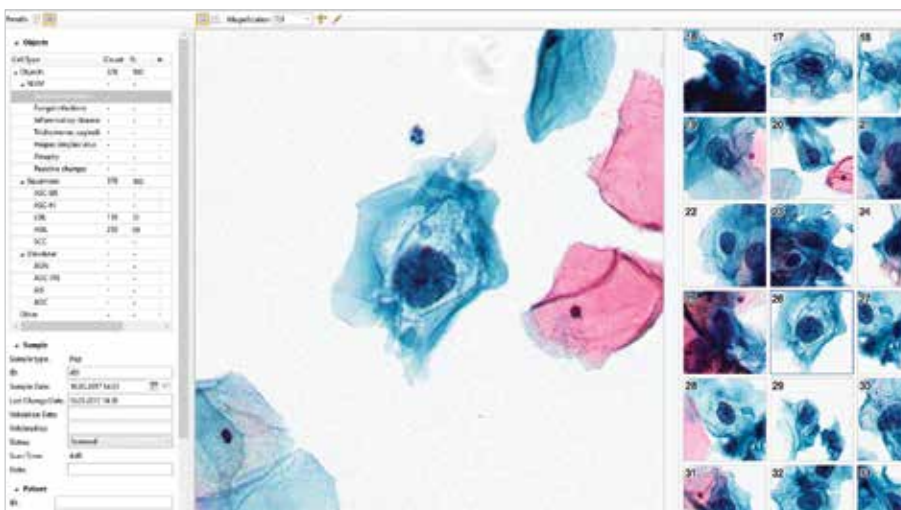
Creating virtual sample.

Calculating the total number of epithelial and average number in the field of view for epithelial cells, at 40x/22 mm field.



Automatic pre-classification by Bethesda system

Creating a gallery of epithelial cells with groups: NILM, ASC-US / AGC, ASC-H / AGC-FN, LSIL, HSIL, SCC / ADC.

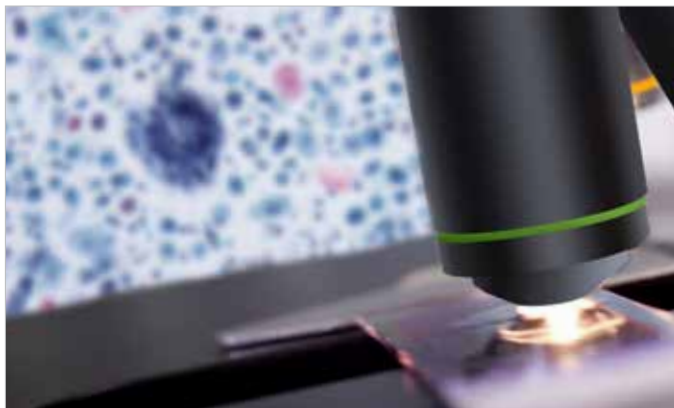


Slide and gallery multiviewing

By switching between cells in the gallery you automatically move from cell to cell in a digital slide.

Automated systems for cervical smear analysis

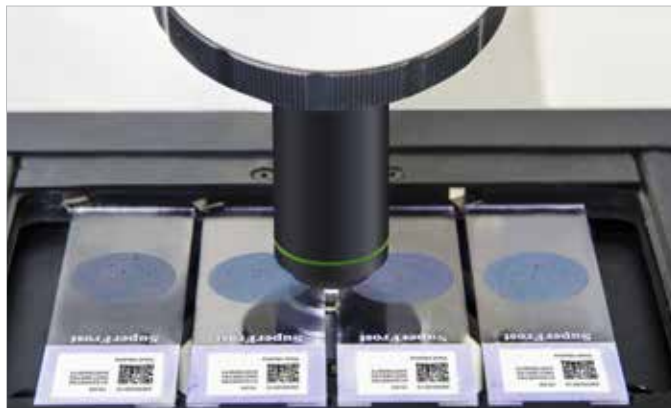
Vision Cyto® Pap Assist



Loading 1 slide

Successive slide loading by operator
Manual slide identification
Automated scanning

Vision Cyto® Pap 4Pro



Loading up to 4 slides

Multiple slide loading by operator
Manual slide identification
Automated scanning

Vision Cyto® Pap 8Pro



Loading up to 8 slides

Slide tray loading
Automated slide identification
Automated scanning

Vision Cyto® Pap Ultimate



Loading up to 200 slides

Automated slide loading
Automated slide identification
Automated scanning

* Product images are shown for reference only and final product may differ